

Blast Protection and Physical Security

GlassLock's BlastBlind™ (Patent Pending) offers a wide variety of retrofit solutions for buildings of architectural or historical significance. Finite Element models of BlastBlind™ are available to match the geometry and construction of typical windows within a facility.

BlastBlind™
meet ISC/GSA
Performance Criteria Level 3
Blast Test Reports
available

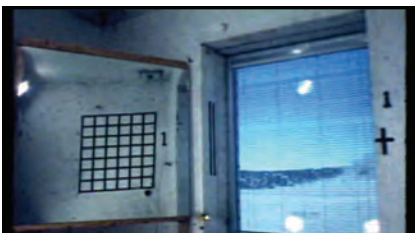
BlastBlind™: Catcher-system are designed for retrofit/renovation on existing buildings that currently have any number of styles and types of window blinds or treatments, and do not want

Glass Failure, Glass Hazard

to alter the architectural sight lines and yet require significant blast hazard mitigation. **BlastBlind™** can be fabricated to look like any standard window blind product or vintage Venetian type for buildings that have a historical significance.

Analysis and Design:

BlastBlind™ was analyzed using LS-DYNA, a non-linear Finite Element Analysis (FEA) program developed by the Livermore Software Technology Corporation.



Patent Pending

Blast Protection and Physical Security

GlassLock's BlastBlind™ (Patent Pending) have shown to provide significant protection while preserving the physical nature and appearance of historic windows.

BlastBlind™
meet ISC/GSA
Performance Criteria Level 3
Blast Test Reports
available



The ISC Design Criteria States: that the window system design on the exterior façade should be balanced to mitigate the hazardous effects of flying glazing following an explosive event. In a conven-

Glass Failure, Glass Hazard

tional system, the walls, anchorage, and window framing should fully develop the capacity of the glazing material selected. However, **BlastBlind™** act as a catcher system rather than attempting to retain the glass in the frame. As a result, the intent of the Criteria can be met by ensuring that the **BlastBlind™** can adequately catch the glass from the design load and transfer the resulting reactions into the structure with out failure of key components of the system structure.

Patent Pending



Schedule
Contract GS-07F-0028T



BlastBlind Color Chart—2” Slat Aluminum



#0001 White Gloss



#0896 Flex White



#0065 Antique White



#0266 Pearl



#0285 Alabaster



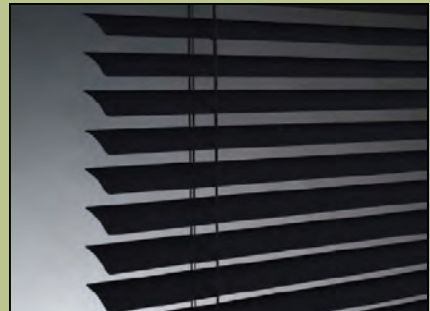
#0276 Eggshell



#0058 Silver



#0060 Bronze



#0049 Black

***Disclaimer: while we strive to ensure the visual details displayed on our product imagery are accurate, they are representative of general product categories only and are not intended to be exact. Due to the nature of printers, scanners, computer monitors and internet browsers, there will be variations in color, texture, detail contrast and brightness. There may be further noticeable differences between the products displayed on this sample and those seen and purchased. For an accurate representation of color, we suggest you reference specific swatch details for more information.